



Bostik
smart adhesives

HOW TO MAKE A

Bostik House

**PARENTAL SUPERVISION
/ASSISTANCE REQUIRED**



YOU'LL NEED:

- Printed Templates
- A4 Coloured card:
House x 4 (sheets),
Roof x1,
Window Crosses x1,
Window Frames x1
Curtains x1,
Shades x 1,
Door Insert x1
- Coloured Markers
- Scissors
- Craft Knife
- Cutting Mat
- Metal Ruler
- Art Smock
- Bostik Blu Stik
- Bostik Fine and Wide Clear Glue
- Bostik Glitter Glue



STEP 1

Print the template, put your art smock on and find a clean surface to work on. Make sure you have everything you need.



STEP 2

Use the Blu Stik to glue the templates to your chosen A4 coloured card.

Ask a parent to cut out each element with the craft knife and metal ruler. All the small dashed lines then need scoring with the back (blunt side) of the craft knife. Do NOT score the large dashed lines around the windows. Make sure they are careful not to cut themselves!

HINT: You can also use scissors.



STEP 3

Making the Windows – INSIDE.

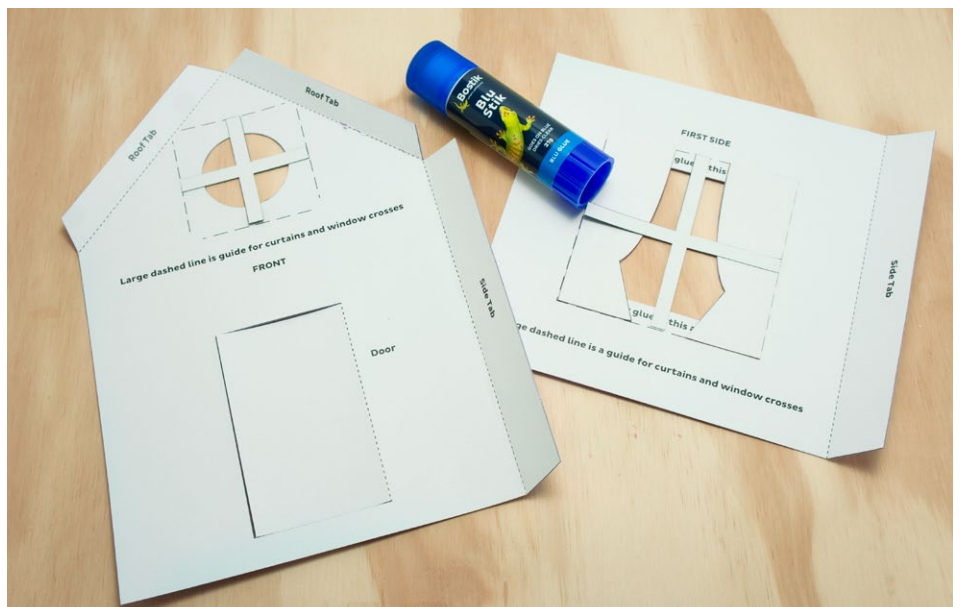
The template side of the first Side should be facing up.

Apply the Blu Stik from the edge of the window to the large dashed line.

First stick on the curtains.

Then stick on the square window cross.

Repeat for the second Side window and the window on the Front of the house.



STEP 4

Making the Windows – OUTSIDE.

Turn the first side over so the template is facing down. Apply the Blu Stik glue to the template side of the window frame, centre it to the hole and stick it down.

Then glue the shades over the top of the window. Glue should only be placed on the thin strip above the dashed line.

Repeat for the second Side of the house, the shade above the front door and front door inset.



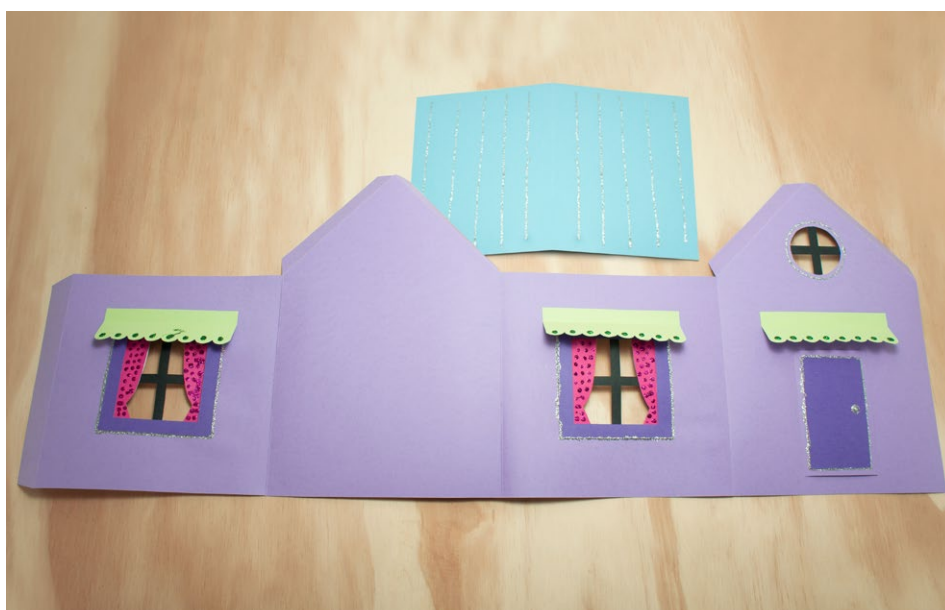
STEP 5

Making the House – CONSTRUCTION

Line up the house elements. Left to right: Second side, back, first side and then the front.

Apply the Fine and Wide glue to the tab at the side of the Front. Stick the first Side on top of the tab. Repeat for the remaining 3 panels.

Decorate with Glitter Glue and the colours markers. Leave to dry.



STEP 6

Making the House – CONSTRUCTION

Apply the Fine and Wide glue to the second side tab and stick it to the inside of the front.

Lay the Roof, template side up flat on the table. Apply the Fine and wide glue to long edges of the Roof.

Turn the house upside down and stick it down carefully to the roof.



ideas that stick

Bostik House

 **Bostik**
smart adhesives

STEP 7

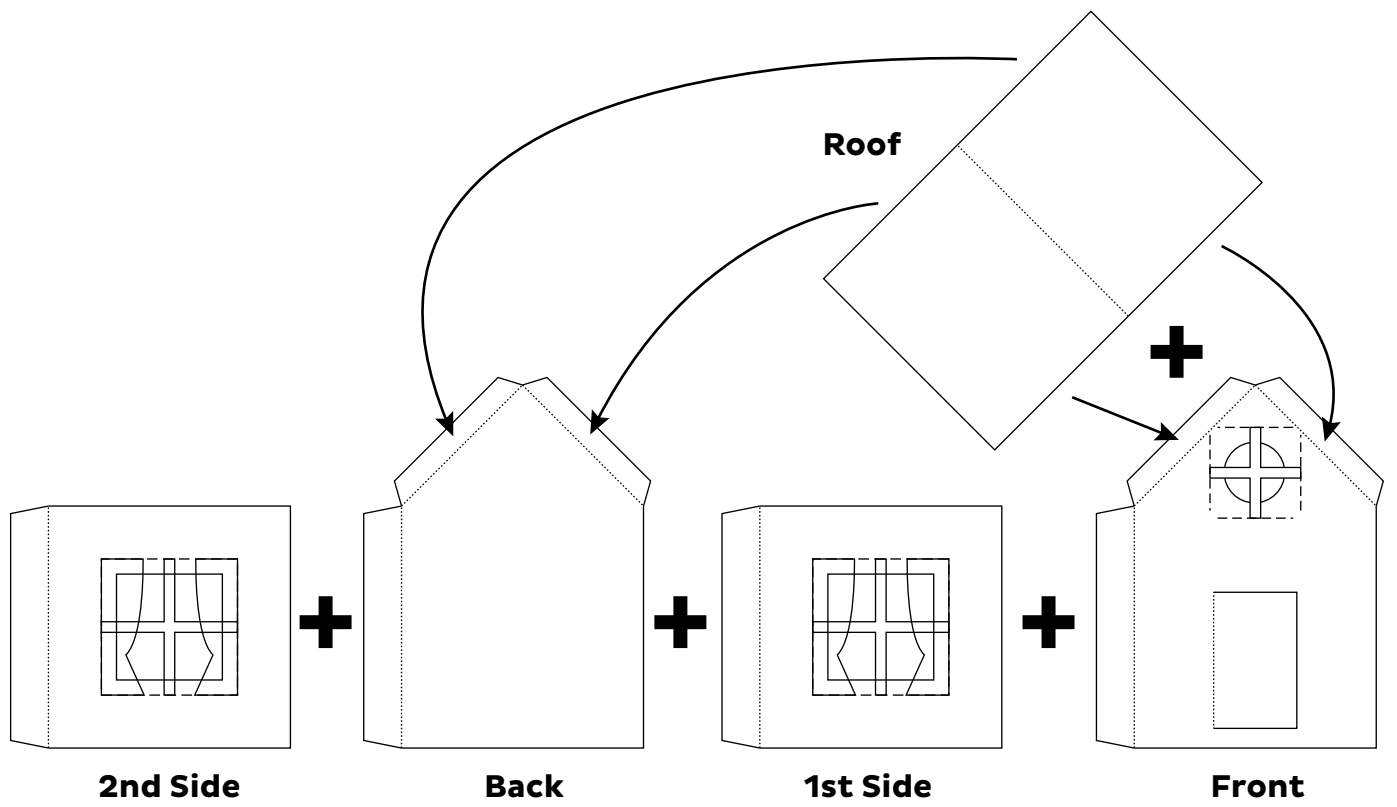
PLAY TIME!

What a house!

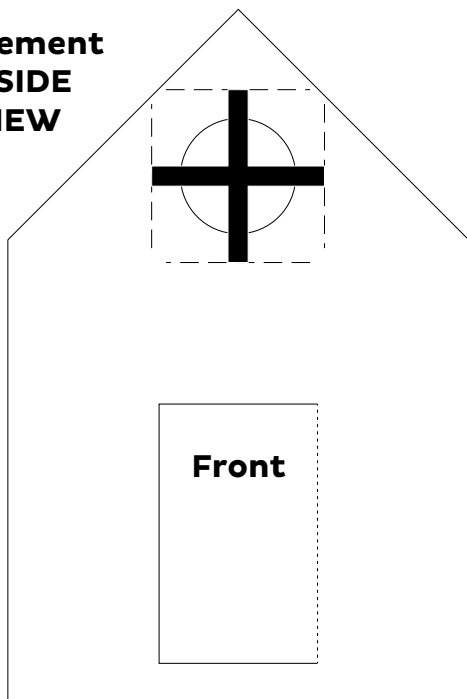


ideas that stick
Bostik House

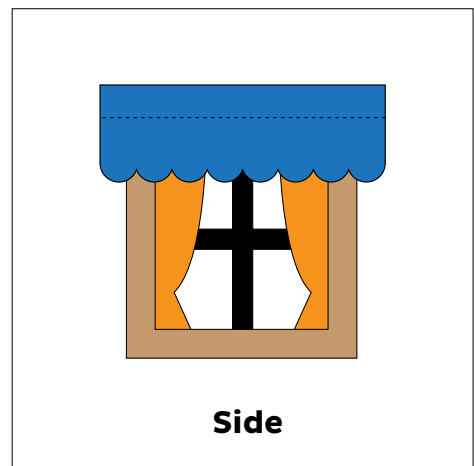
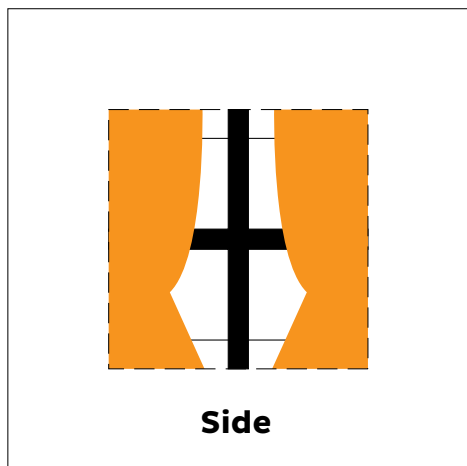
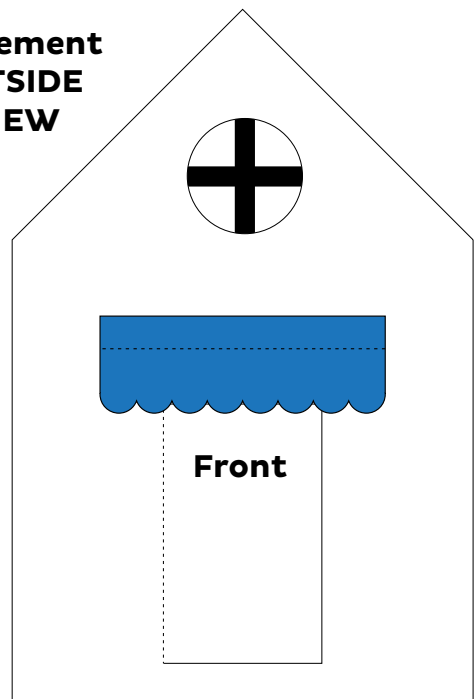


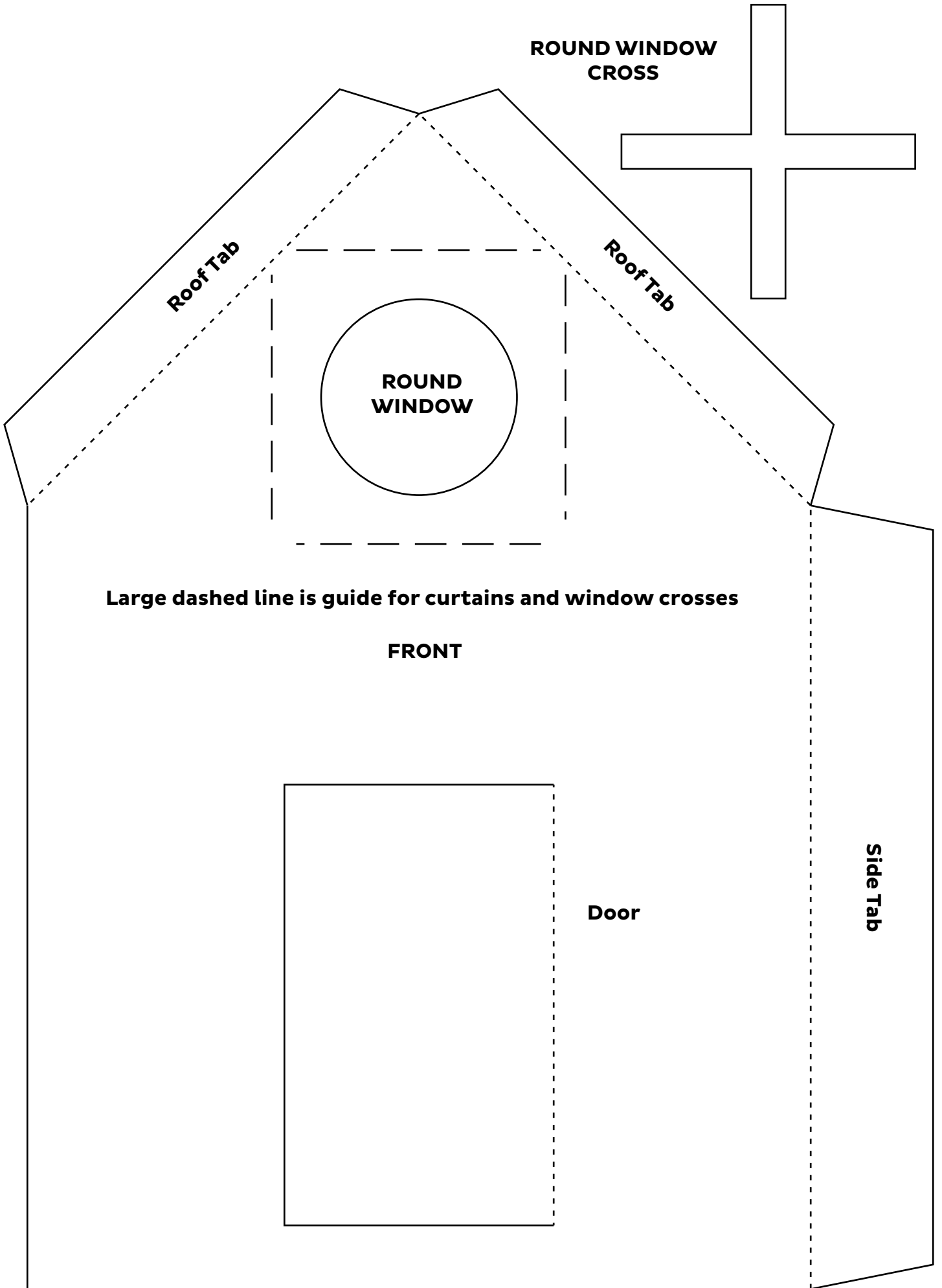


**Placement
INSIDE
VIEW**



**Placement
OUTSIDE
VIEW**





**ROUND WINDOW
CROSS**

Roof Tab

Roof Tab

**ROUND
WINDOW**

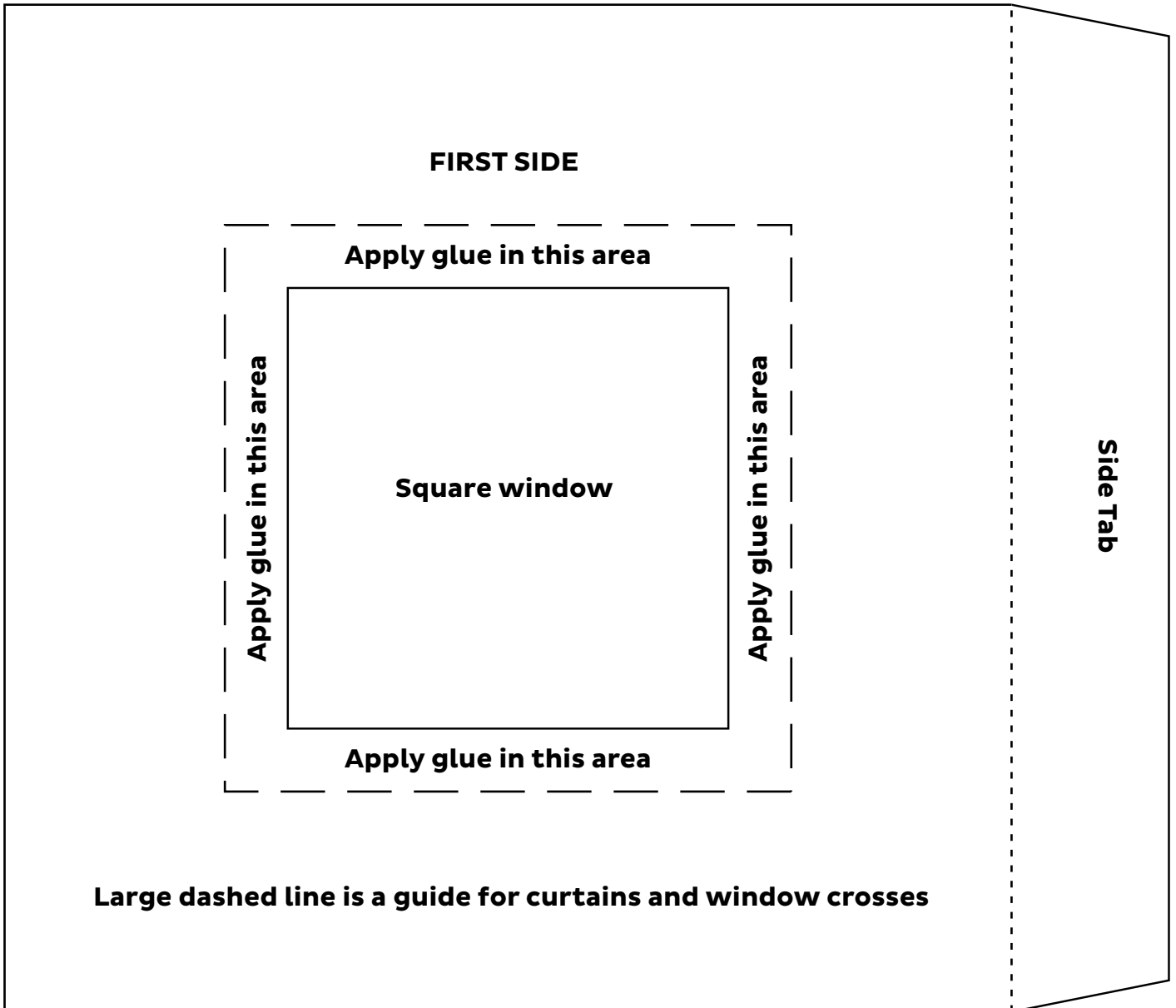
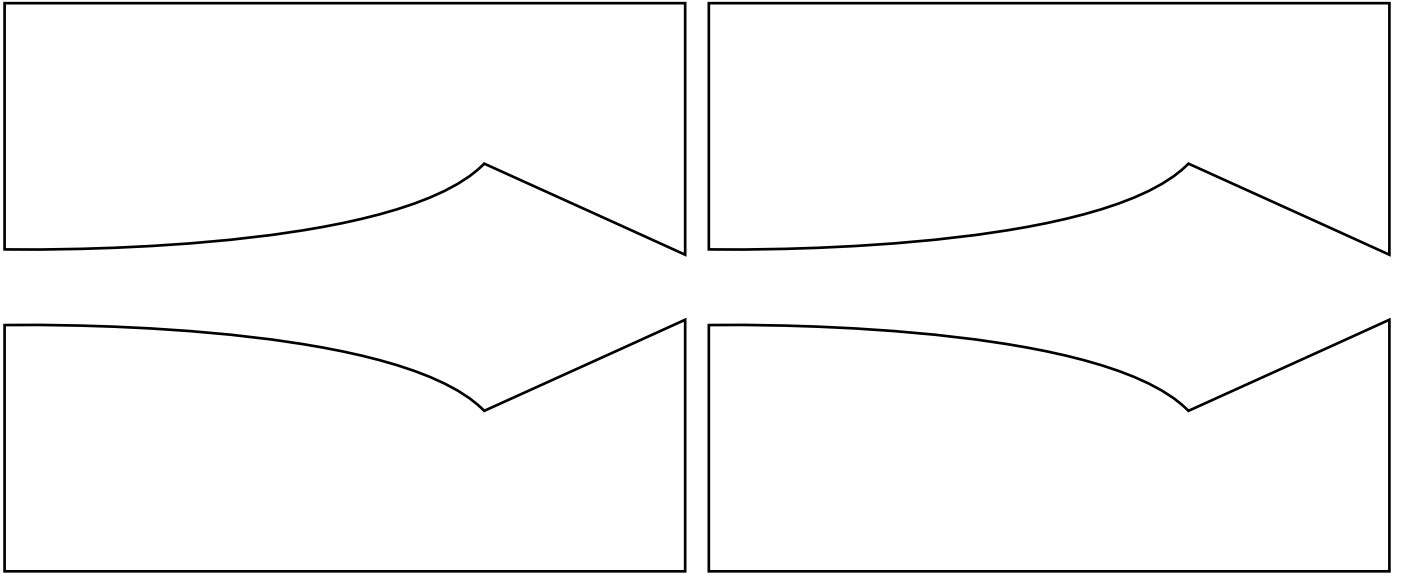
Large dashed line is guide for curtains and window crosses

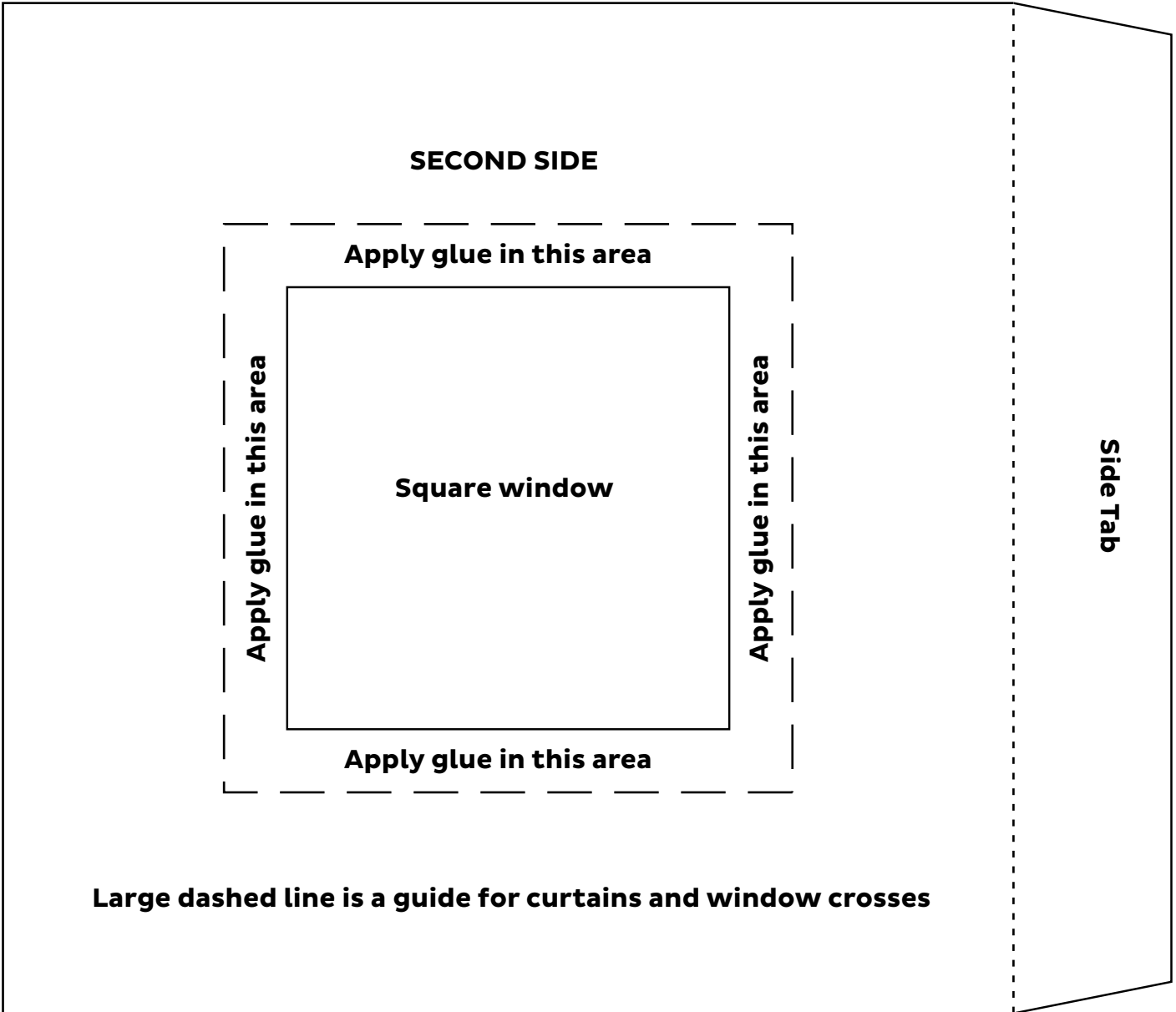
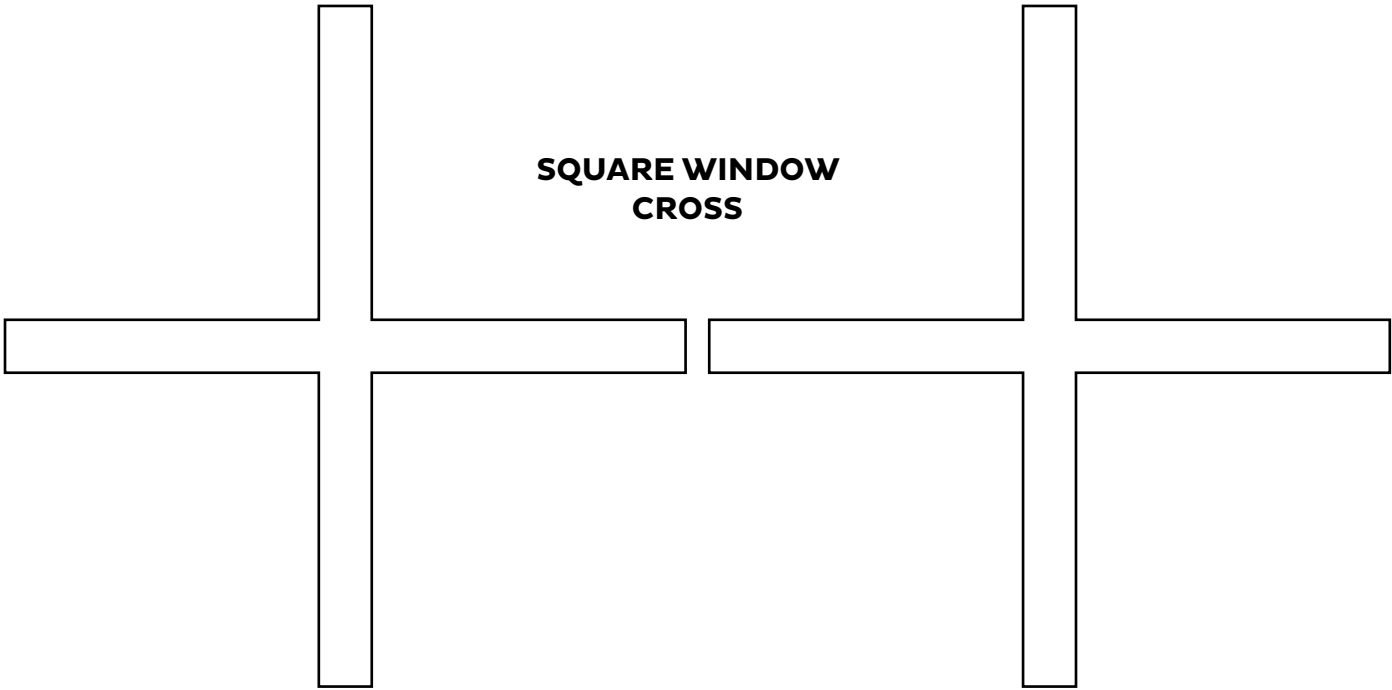
FRONT

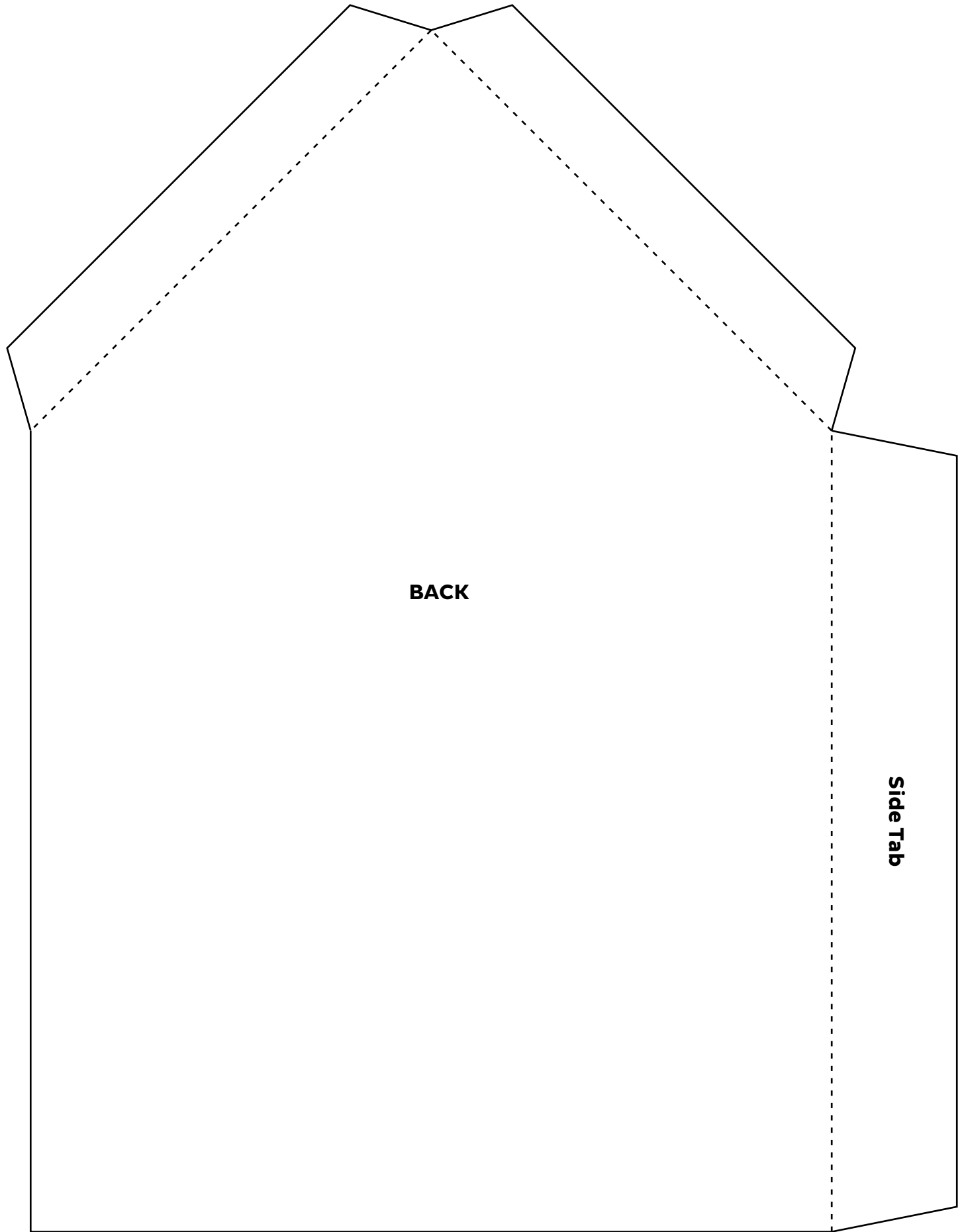
Door

Side Tab

CURTAINS



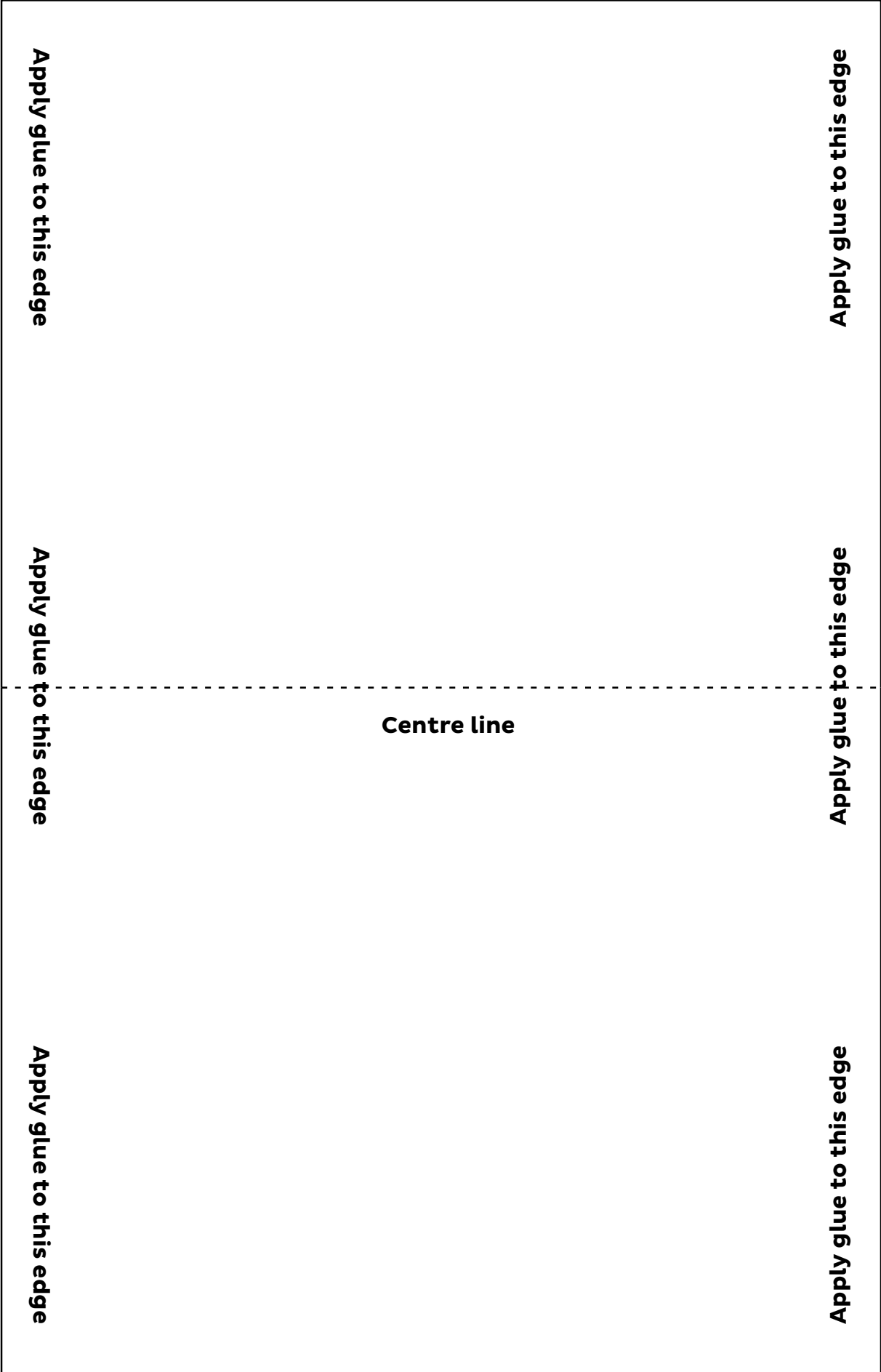




BACK

Side Tab

Roof



Apply glue to this edge

Apply glue to this edge

Apply glue to this edge

Centre line

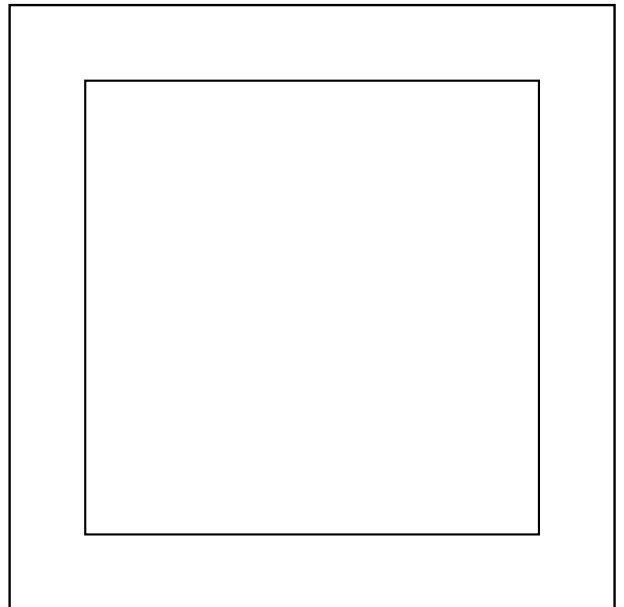
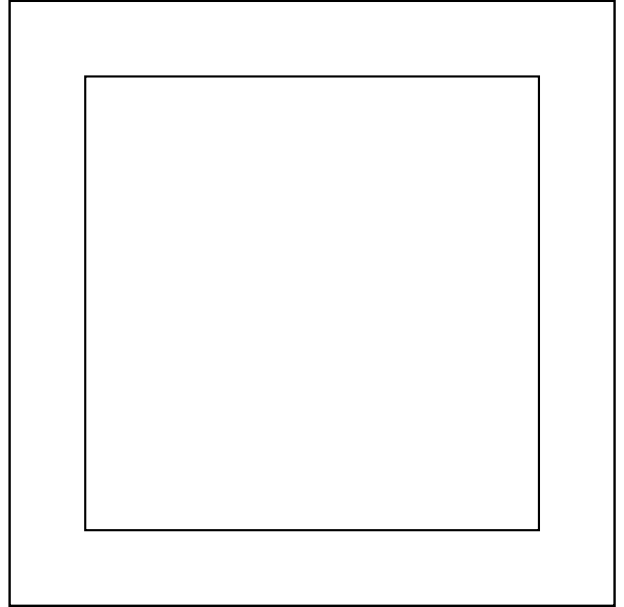
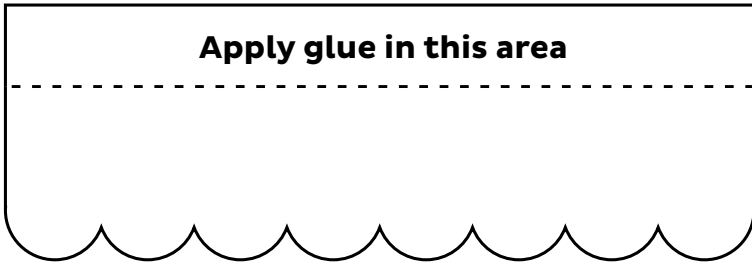
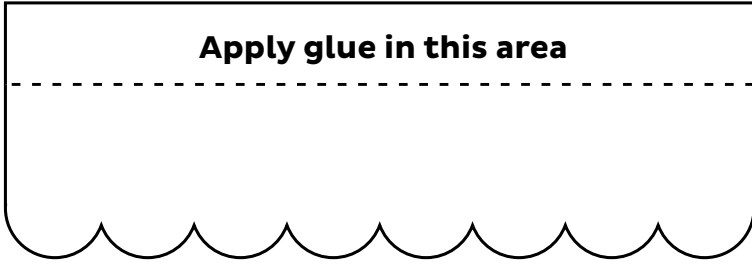
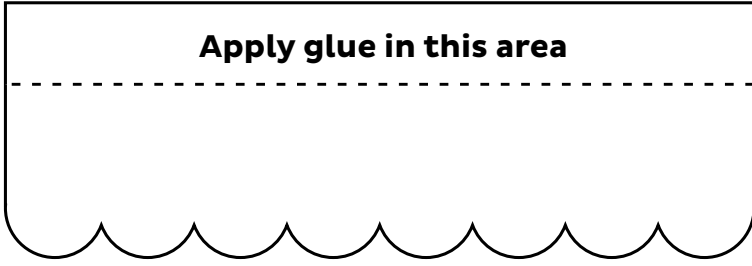
Apply glue to this edge

Apply glue to this edge

Apply glue to this edge

SHADES

WINDOW FRAMES



DOOR INSET

